

LASA  
NIGHT STORAGE UNITS



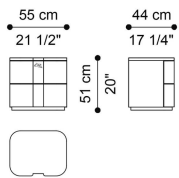
### DESCRIPTION

Structure and top in multilayer wood lacquered with colours from the collection or lacquered matt Ivory with spatula finishing or Patinated Dark Wengé with spatula finishing.  
Drawers in multilayer wood with inner cover in microfibre. Drawers front lacquered with colours from the collection or lacquered matt Ivory with spatula finishing or Patinated Dark Wengé with spatula finishing.  
Central detail lacquered Brushed Dark Bronze.  
Decorative Pegasus in laser-cut brass foil, fixed on the front of the top drawer.  
Base in lacquered multilayer wood lacquered with colours from the collection.

### DIMENSIONS

#### NIGHT TABLE

##### **E.LAS.321.A**

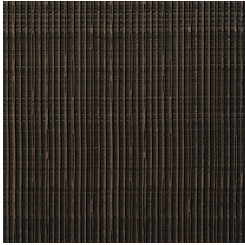


L 55 D 44 H 51 CM

---

STRUCTURE/TOP

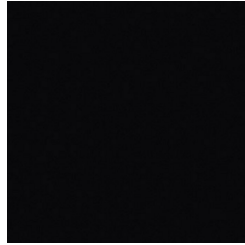
**WOOD**



Patinated Dark  
Wengé Lacquered  
Wood With Spatula  
Finishing - Semi-  
Glossy



Ivory Lacquered  
Wood With Spatula  
Finishing - Matt



Black Lacquered  
Wood - Matt

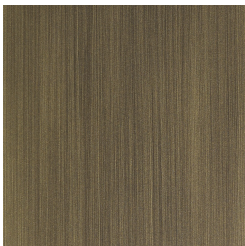


Ivory Lacquered  
Wood - Matt

---

DECORATIVE INSERT

**WOOD**

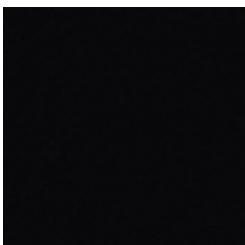


Brushed Dark Bronze  
Lacquered Wood

---

BASE

**WOOD**



Black Lacquered  
Wood - Matt



Ivory Lacquered  
Wood - Matt