

LASA
NIGHT STORAGE UNITS



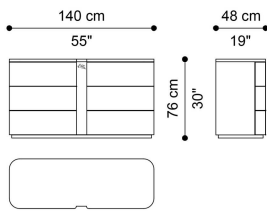
DESCRIPTION

Structure and top in multilayer wood lacquered with colours from the collection or lacquered matt Ivory with spatula finishing or Patinated Dark Wengé with spatula finishing.
Drawers in multilayer wood with inner cover in microfibre. Drawers front lacquered with colours from the collection or lacquered matt Ivory with spatula finishing or Patinated Dark Wengé with spatula finishing. Central detail lacquered Brushed Dark Bronze. Decorative Pegasus in laser-cut brass foil, fixed on the front of the top drawer.
Base in multilayer wood lacquered with colours from the collection.

DIMENSIONS

DRAWER UNIT

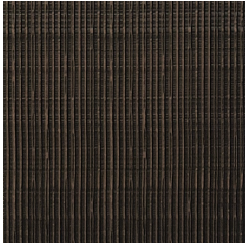
E.LAS.331.A



L 140 D 48 H 76 CM

STRUCTURE/TOP

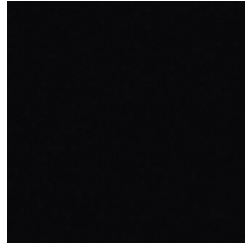
WOOD



Patinated Dark
Wengé Lacquered
Wood With Spatula
Finishing - Semi-
Glossy



Ivory Lacquered
Wood With Spatula
Finishing - Matt



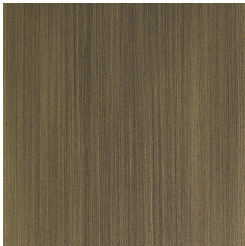
Black Lacquered
Wood - Matt



Ivory Lacquered
Wood - Matt

DECORATIVE INSERT

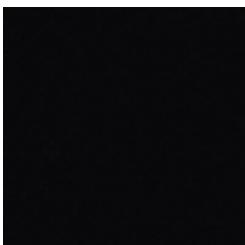
WOOD



Brushed Dark Bronze
Lacquered Wood

BASE

WOOD



Black Lacquered
Wood - Matt



Ivory Lacquered
Wood - Matt