



---

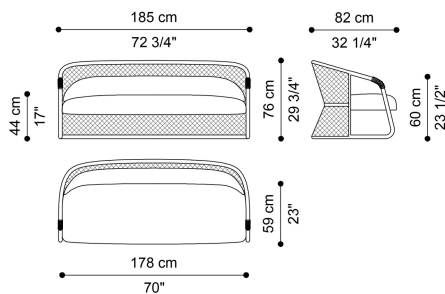
## DESCRIPTION

Structure in solid beech wood dyed matt Dark Wengé, turned and worked with a numeric control system. Decorative rings fixed on armrests, composed of two interlocking pieces in cast brass, Polished or with Brushed Dark Bronze finishing. Backrest in wicker caning from the collection, attached to the structure. Closure piping in same colour as caning. Seat in multilayer wood and variable thickness high density expansive polyurethane foam. Upholstery in fabric or leather from the collection. Back cushion in variable thickness high density expansive polyurethane foam. Upholstery in fabric or leather from the collection.

---

## DIMENSIONS

### LOVESEAT E.HAM.211.A

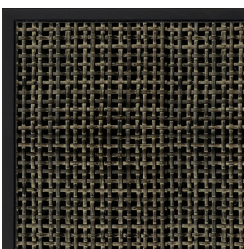


L 185 D 82 H 76 CM

---

## BACKREST

### RATTAN



Brushed Dark Wengé  
Dyed Wicker Caning  
On Solid Wood Dyed  
Dark Wengé - Matt

---

**STRUCTURE**

**WOOD**



Solid Wood Dark  
Wengé Dyed - Matt

---

**DECORATIVE INSERT**

**METAL**



Metal Brushed Dark  
Bronze




Polished Brass

---

**UPHOLSTERY**


**FABRIC / LEATHER**

 [download the file in the product page](#)

---

**ACCESSORIES**

**DECORATIVE CUSHIONS**

 [download the file in the product page](#)