

HAMAR
ARMCHAIRS

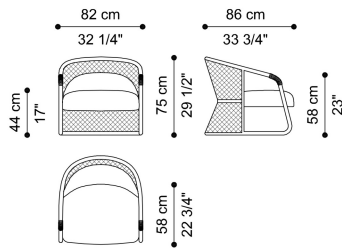


DESCRIPTION

Structure in solid beech wood dyed matt Dark Wengé, turned and worked with a numeric control system. Decorative rings fixed on armrests, composed of two interlocking pieces in cast brass, Polished or with Brushed Dark Bronze finishing. Backrest in wicker caning from the collection, attached to the structure. Closure piping in wicker in same colour as caning. Seat in multilayer wood and variable thickness high density expansive polyurethane foam. Upholstery in fabric or leather from the collection. Back cushion in variable thickness high density expansive polyurethane foam. Upholstery in fabric or leather from the collection.

DIMENSIONS

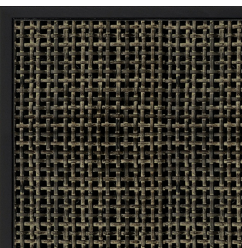
ARMCHAIR E.HAM.221.A



L 82 D 86 H 75 CM

BACKREST

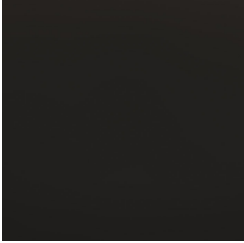
RATTAN



Brushed Dark Wengé
Dyed Wicker Caning
On Solid Wood Dyed
Dark Wengé - Matt

STRUCTURE

WOOD



Solid Wood Dark
Wengé Dyed - Matt

DECORATIVE INSERT

METAL




Metal Brushed Dark
Bronze



Polished Brass


UPHOLSTERY

FABRIC / LEATHER

 [download the file in the product page](#)

ACCESSORIES

DECORATIVE CUSHIONS

 [download the file in the product page](#)