

KLEE
POUFS

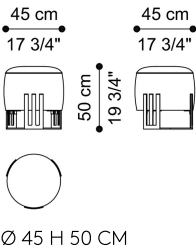


DESCRIPTION

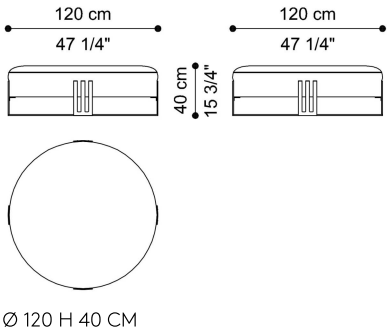
Base in laser-cut aluminium with Venus Gold or Dusk Bronze finishing.
Seat in multilayer wood and variable thickness high density expansive polyurethane foam. Upholstery and piping in fabric or leather from the collection.

DIMENSIONS

POUF
T.KLEPF01B



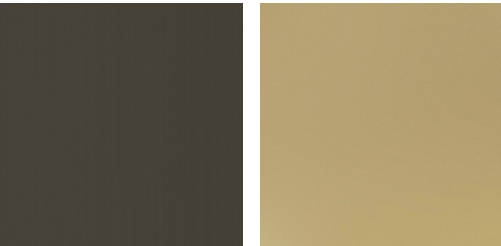
POUF
T.KLEPF01G



BASE

METAL


Varnished Metal



Metal Dusk Bronze - Semi-Glossy Metal Venus Gold - Semi-Glossy

UPHOLSTERY

FABRIC / LEATHER

 download the file in the product page