

ROTUNDA
DAY STORAGE UNITS



ROTUNDA

DAY STORAGE UNITS

DESCRIPTION

Structure in curved multilayer poplar wood, veneered in Persian Walnut, Dark Dyed Canaletto Walnut (with 45° diagonal grain direction), or lacquered in glossy finishing from the collection.

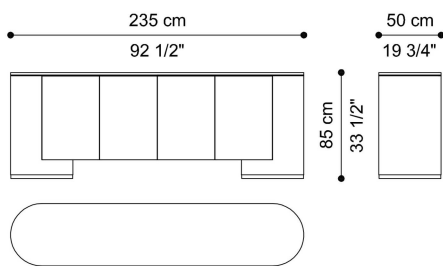
Top in MDF covered in Arnica coated fabric or in marble from the collection.

Inner parts covered in anthracite microfibre. Details in special finishing Brushed Venus Gold.

DIMENSIONS

SIDEBOARD

T.ROTDS04Q



L 235 D 50 H 85 CM

STRUCTURE

WOOD

Solid Colour Lacquered Wood - Glossy



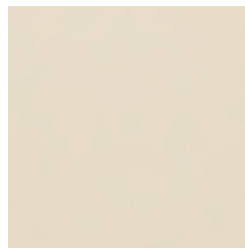
Clay Lacquered
Wood - Glossy



Dolphin Lacquered
Wood - Glossy



Green Brown
Lacquered Wood -
Glossy



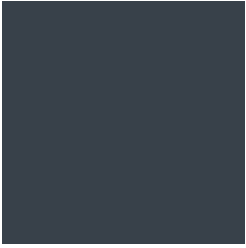
Ivory Lacquered
Wood - Glossy



Lime Lacquered
Wood - Glossy

ROTUNDA

DAY STORAGE UNITS



Night Blue
Lacquered Wood -
Glossy



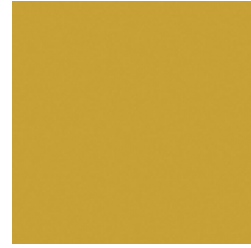
Olive Green
Lacquered Wood -
Glossy



Powder Lacquered
Wood - Glossy

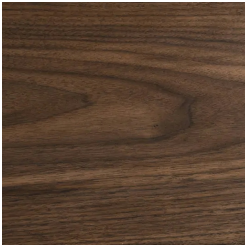


Wine Lacquered
Wood - Glossy

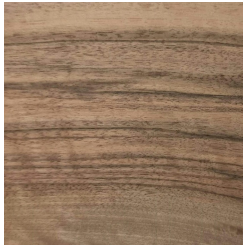


Yellow Lacquered
Wood - Glossy

Veneered Wood



Dark Dyed Canaletto
Walnut Veneered
Wood - Matt



Persian Walnut
Veneered Wood -
Matt

TOP

COATED FABRIC

Arnica Coated Fabric



Arnica Coated Fabric

ROTUNDA

DAY STORAGE UNITS

MARBLE

Marble Cat. A



Marble cat. A
Emperador Light

Marble cat. A Giallo
Reale

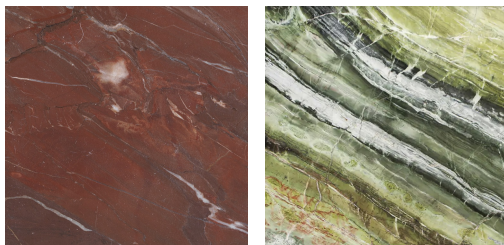
Marble Cat. B



Marble cat. B
Eramosa Cloudy
Pattern

Marble cat. B
Eramosa Striped
Pattern

Marble Cat. C



Marble cat. C Red
Napoleon

Marble cat. C Verde
Tifone